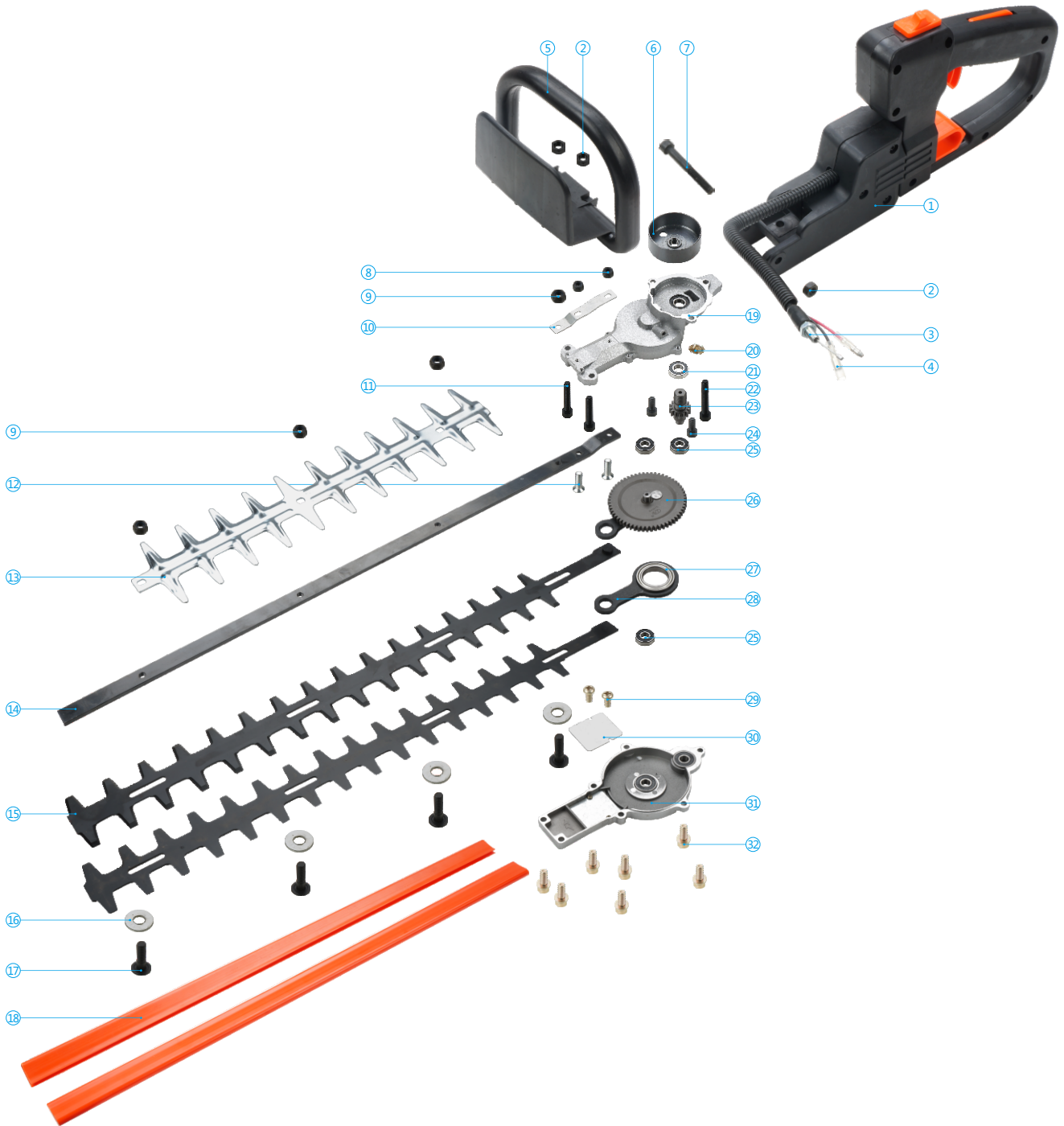


绿篱剪刀部件分解图

HEDGE CUTTER EXPLODED VIEW



绿篱剪刀部件明细表

HEDGE CUTTER PARTS LIST

| 序号(No.) | 名称 | NAME | 数量(Qty) |
|---------|--------------|----------------|---------|
| 1 | 油门手把 | REAR HANDLE | 1 |
| 2 | M6螺母 | NUT M6 | 3 |
| 3 | 油门线 | THROTTLE CABLE | 1 |
| 4 | 熄火线 | CORD, FLAMEOUT | 2 |
| 5 | M6x50内六角螺钉 | BOLT M6x50 | 1 |
| 6 | 被动盘 | CLUTCH DRUM | 1 |
| 7 | 提把 | HANDLE | 1 |
| 8 | M5防松螺母 | LOCKNUT M5 | 2 |
| 9 | M6防松螺母 | LOCKNUT M6 | 4 |
| 10 | 加强板 | PLATE | 1 |
| 11 | M6x30内六角螺钉 | BOLT M6x30 | 2 |
| 12 | M5x16十字平头螺钉 | BOLT M5x16 | 2 |
| 13 | 钝齿 | BLADE GUARD | 1 |
| 14 | 上压板 | PLATE, UPPER | 1 |
| 15 | 刀片 | BLADE | 2 |
| 16 | Φ6垫片 | WASHER Φ6 | 4 |
| 17 | M6x18十字盘头螺钉 | BOLT M6x18 | 4 |
| 18 | 护套 | COVER, BLADE | 2 |
| 19 | 齿轮箱 | GEARBOX | 1 |
| 20 | 加油嘴 | ZERK | 1 |
| 21 | 轴承6001 | BEARING 6001 | 1 |
| 22 | M6x35内六角螺钉 | BOLT M6x35 | 1 |
| 23 | 传动齿轮 | GEAR,DRIVE | 1 |
| 24 | M6x16内六角螺钉 | BOLT M6x16 | 2 |
| 25 | 轴承608 | BEARING 608 | 3 |
| 26 | 输出齿轮 | gear, driven | 1 |
| | 轴承6805 | BEARING 6805 | 1 |
| | 连杆 | ROD | 1 |
| | 偏心轮 | GEAR,DRIVEN | 1 |
| | 圆柱销 | PIN | 1 |
| 27 | 轴承6805 | BEARING 6805 | 1 |
| 28 | 连杆 | ROD | 1 |
| 29 | M3x6十字平头螺钉 | BOLT M3x6 | 2 |
| 30 | 减磨垫 | WASHER | 1 |
| 31 | 齿轮箱盖 | COVER, GEARBOX | 1 |
| 32 | M5x16内六角组合螺钉 | BOLT M5x16 | 7 |