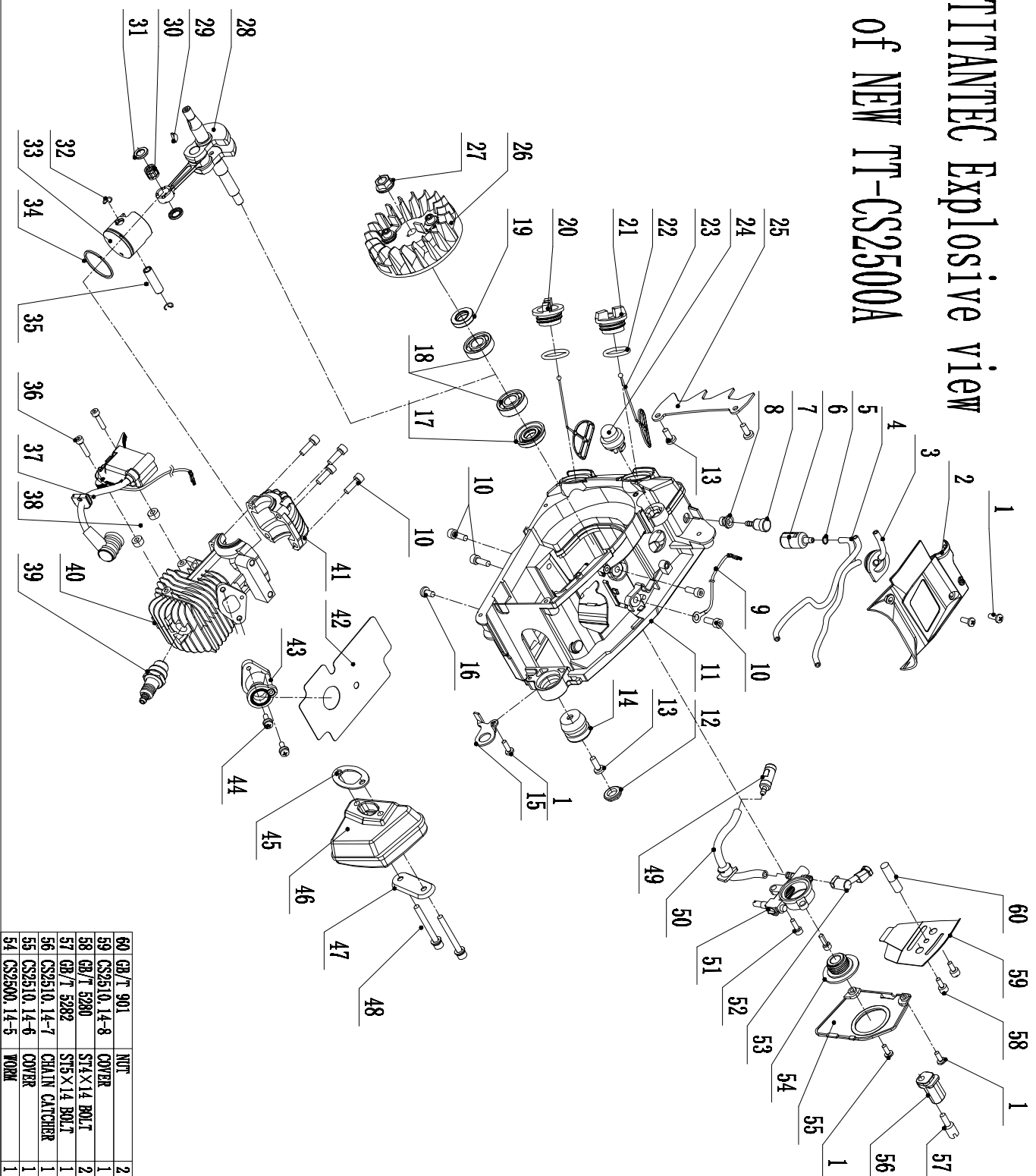


TITANTEC Explosive view of NEW TT-CS2500A



53	CS2500.14-4	SPRAYER	1
52	GB/T 70.1	M4×12 BOLT	1
51	CS2500.14-3	OIL PUMP	2
50	CS2500.14-2	OIL PIPE	1
49	CS2500.14-1	OIL FILTER	1
48	GB/T 70.1	M5×45 BOLT	2
47	CS2500.9-3	PLATE	1
46	CS2500.9-2	MUFFLER	1
45	CS2500.9-1	GASKET	1
44	GB/T 818	M4×14 BOLT	2
43	CS2500.1-10	INSULATOR	1
42	CS2510.1-9	GASKET	1
41	CS2500.2-2	COVER	1
40	CS2500.2-1	CYLINDER	1
39	1T7	SPARK PLUG	1
38	CS2500.6-3	SPACER	2
37	CS2500.6-2	IGNITION COIL	1
36	GB/T 70.1	M4×18 BOLT	2
35	CS2500.5-4	PISTON PIN	1
34	CS2500.5-3	PISTON RING	1
33	CS2500.5-2	PISTON	1
32	CS2500.5-1	SNAP RING	2
31	CS2500.4-2	WASHER	2
30	GB/T 283	88×11×10BEARING	1
29	GB/T 1098	KEY	1
28	CS2500.4-1	CRANKSHAFT	1
27	GB/T 6177.1	FLANGE NUT	1
26	CS2500.6-1	FLYWHEEL	1
25	CS2510.3-20	BUMPER	1
24	CS2500.3-19	PRIMER BULB	1
23	CS2500.3-18	C.T.P	2
22	CS2500.3-17	SEAL RING	2
21	CS2510.3-16	ROEL CAP	1
20	CS2510.3-15	OIL CAP	1
19	CS2500.3-14	OIL SEAL 12×22×7	1
18	GB/T 276	BEARING 6001	2
17	CS2500.3-13	OIL SAIL 12×28×7	1
16	GB/T 818	M5×10 BOLT	1
15	CS2500.3-12	DANGER	1
14	CS2500.3-11	DAMPER	1
13	GB/T 845	SFS×14BOLT	3
12	CS2500.3-10	CAP	1
11	CS2510.3-9	CRANKCASE	1
10	GB/T 70.1	M5×16 BOLT	8
9	CS2500.3-8	COND	1
8	CS2500.3-7	GROMMET	1
7	CS2500.3-6	BREATHER	1
6	CS2500.3-5	FUEL FILTER	1
5	CS2500.3-4	SPRING	1
4	CS2500.3-3	FUEL PIPE	1
3	CS2510.3-2	GROMMET	1
2	CS2510.3-1	CRANKCASE COVER	1
1	GB/T 845	S14×12 BOLT	7
60	GB/T 901	NUT	2
59	CS2510.14-8	COVER	1
58	GB/T 5280	S14×14 BOLT	2
57	GB/T 5282	S15×14 BOLT	1
56	CS2510.14-7	CHAIN CATCHER	1
55	CS2510.14-6	COVER	1
54	CS2500.14-5	WORK	1